



ORGANIZATIONAL TOOLS

Racks and storage boxes



FOR MORE INFORMATION:
labcon.com/orgtools.html



Reusable Racks

For Labcon's Eclipse™ Refill System or bulk tips

Refillable 96 racks offer workhorse reliability and versatility. They have heavy hook hinges that are extremely durable and an ergonomic snap latch that won't catch gloves. The separate rack insert includes a beveled top and extra sturdy surface for multichannel pipetting. Labcon racks are strong enough to be autoclaved many times.

- 96 tips per rack
- Made from 100% pre-consumer high quality recycled plastic
- Reusable — can be autoclaved (122°C) and refilled many times
- Recyclable with resin ID code imprinted for easy recycling
- Ergonomic snap latch won't catch gloves



Racks For Eclipse™ Refill System

Tip platform not included because it is included in the Eclipse™ Refill System

Description	Color	Item #	Qty/Pk	Qty/Cs
10 - 250 µL	Purple	1280-960-006-9	10	100
	Teal	1280-960-008-9	10	100
	Assorted*	1280-969-000-9	10	100
100 - 1250 µL	Purple	1279-960-006-9	6	48
	Teal	1279-960-008-9	6	48
	Assorted**	1279-969-000-9	6	48

*Assorted includes: yellow, white, blue, green & purple

**Assorted includes: yellow, white, blue, green, purple, & extra white



Racks For Bulk Tips

Racks include a tip platform

Description	Color	Item #	Qty/Pk	Qty/Cs
10 µL - 250 µL	Teal	1299-960-038-9	12	120
10 µL - 300 µL	Teal	1210-960-008-9	10	100
1000-1250 µL	Teal	1277-960-008-9	6	48
	Teal	1278-960-008-9*	6	48

* Raised platform for 1045 and 1057 pipette tips





Reusable Racks

For Labcon centrifuge tubes

Labcon's plastic centrifuge tube storage racks eliminate wasteful styrofoam racks. They are durable, reusable, interlockable, stackable, freezable, and recyclable. Made from 100% pre-consumer high quality recycled polypropylene from our in-house plastic scrap recycling program. Designed to hold Labcon centrifuge tubes specifically, but may fit other brands of centrifuge tubes.

- 25 tubes per rack with numbered wells
- 100% pre-consumer high quality recycled plastic
- Recommended when freezing samples in tubes (-80°C)
- Reusable — can be autoclaved (122°C) and refilled
- Stackable when empty for easy storage
- Recyclable with resin ID code imprinted
- Lock together to form a benchtop workstation



Racks for **15 mL** centrifuge tubes

Also fits **5 mL** snap cap tubes

Color	Item #	Qty/Pk	Qty/Cs
Blue	2715-227-000-9	5	5
Orange	2715-223-000-9	5	5
Green	2715-228-000-9	5	5
Natural	2715-220-000-9	5	5
Purple	2715-226-000-9	5	5
White	2715-221-000-9	5	5
Red	2715-224-000-9	5	5
Yellow	2715-222-000-9	5	5
Assorted*	2715-229-000-9	5	5

*Assorted includes: yellow, orange, red, green, blue



Racks for **50 mL** centrifuge tubes

Color	Item #	Qty/Pk	Qty/Cs
Blue	2750-227-000-9	5	5
Orange	2750-223-000-9	5	5
Green	2750-228-000-9	5	5
Natural	2750-220-000-9	5	5
Purple	2750-226-000-9	5	5
White	2750-221-000-9	5	5
Red	2750-224-000-9	5	5
Yellow	2750-222-000-9	5	5
Assorted*	2750-229-000-9	5	5

*Assorted includes: yellow, orange, red, green, blue





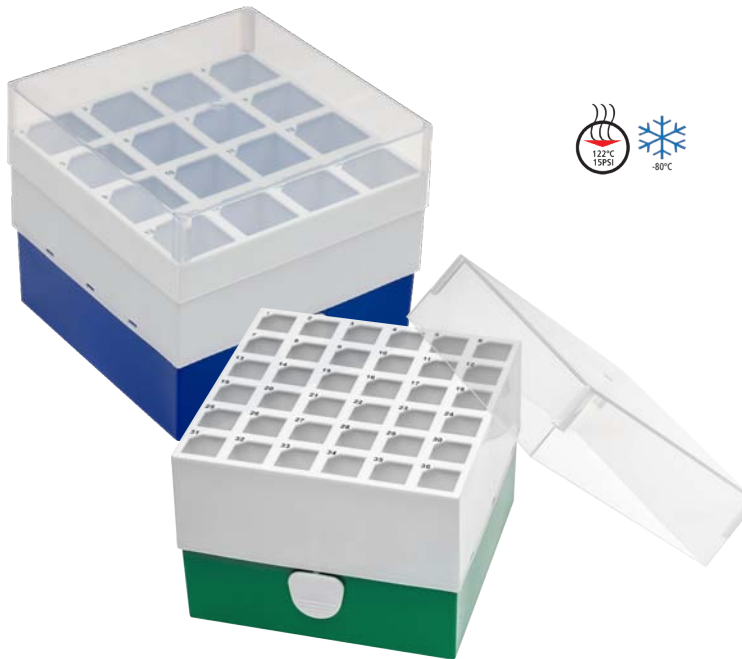
Cardboard Racks

For Labcon centrifuge tubes

Labcon's patented recyclable cardboard racks are designed to hold Labcon centrifuge tubes specifically, but may fit other brands of centrifuge tubes. They feature numbered wells and a view port cut into the cardboard that allows users to see bottoms of the tubes. They fold flat for easy recycling.

- 25 tubes per rack with numbered wells
- A view port allows users to see filled tubes

Description	Item	Qty/Cs
For 15mL Tubes	2751-500-000-9	200
For 50mL Tubes	2752-500-000-9	225



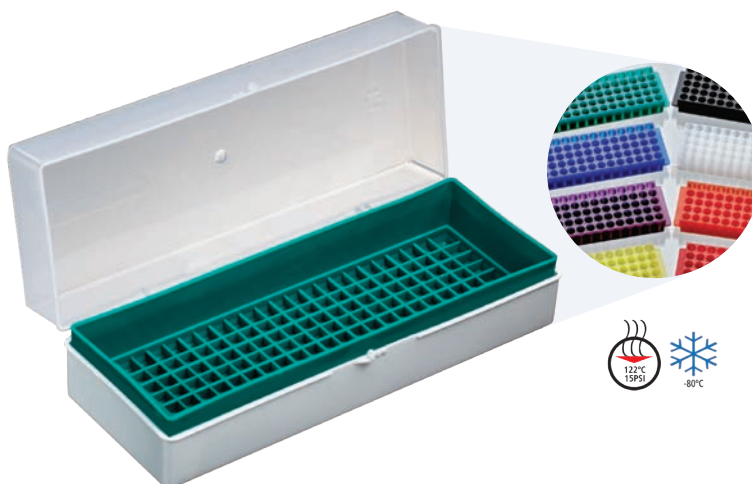
16 and 36 Place Freezer Storage Boxes

For 50 mL and 15 mL centrifuge tubes

These boxes are perfect for long term storage of frozen samples. They include a white upper body that can be easily labeled with a lab marker, a numerical reference grid for easy content identification, and a pull tab to make removal from storage racks easier. A clear cover is included. Made of polypropylene.

Autoclavable (122°C) and freezable (-80°C)

Description	Item #	Qty/Pk	Qty/Cs
16-Place, Blue	2704-220-000-9	2	2
36-Place, Green	2703-220-000-9	2	2



80-Place Rack Hinged Storage Box

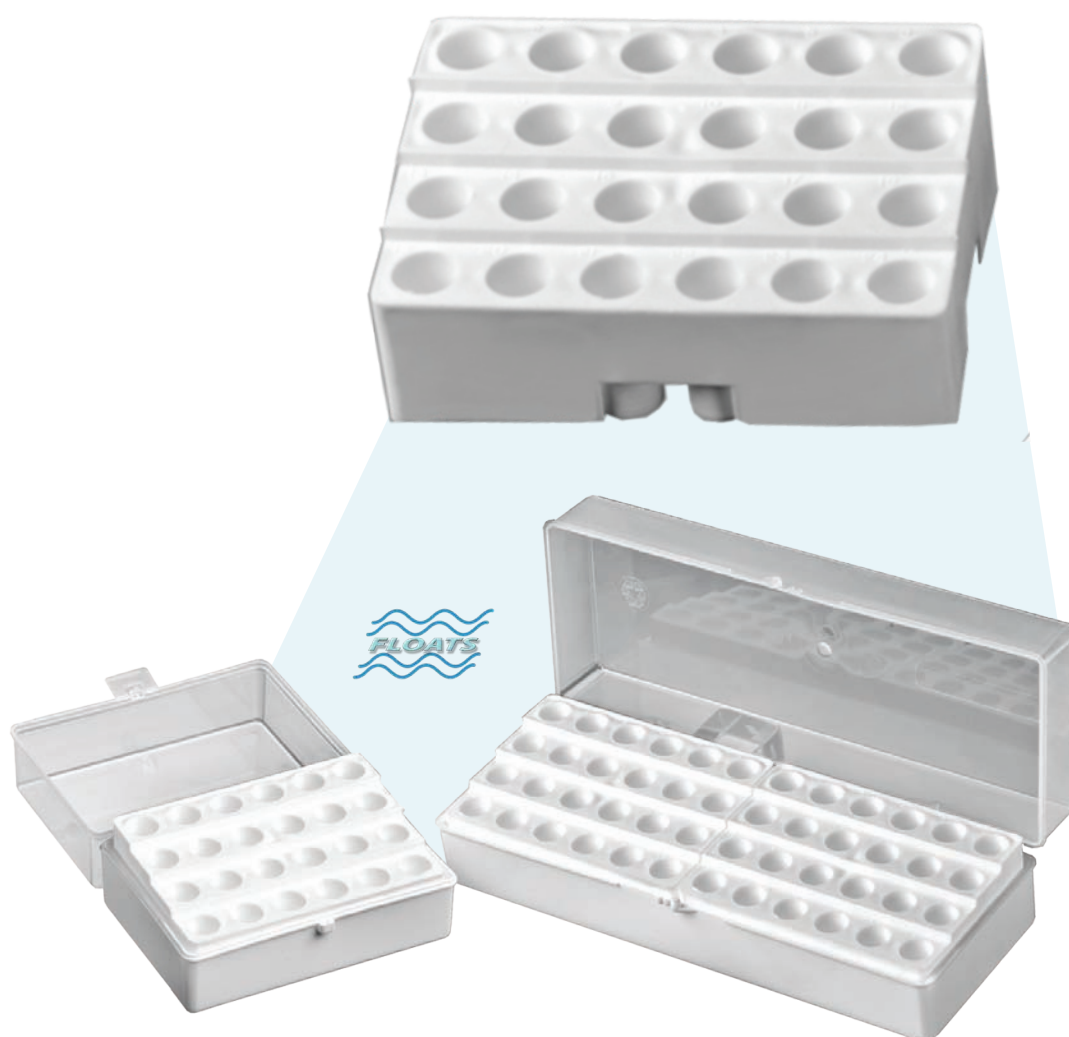
For use with 80-place microcentrifuge tube racks

Made of polypropylene

Autoclavable (122°C) and freezable (-80°C)

Item #	Qty/Pk	Qty/Cs
2601-220-000-9	5	50



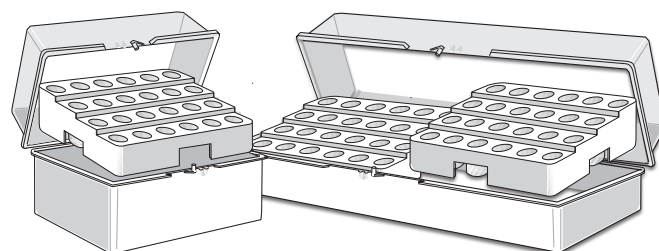


24 and 48 Place Floating Racks

For 1.5 mL or 2.0 mL microcentrifuge tubes and cryo-vials

Floating racks are stackable, fit into Labcon pipette tip boxes, and float in your water bath and can incorporate dry ice for use with frozen samples on the bench. Autoclavable (122°C) and freezable (-190°C).

Description	Item #	Qty/Pk	Qty/Cs
24 Place Rack, in hinged box	3035-500 -000-9	10	10
24 Place Rack, without box	3036-220 -000-9	10	100
48 Place Rack, in hinged box	3035-230 -000-9	5	50
Hinged box, without rack	1215-120 -000-9	5	50



Fits into Labcon 96 and 192 pipette tip racks