



DIRECT SAMPLE ANALYSIS TOF MS

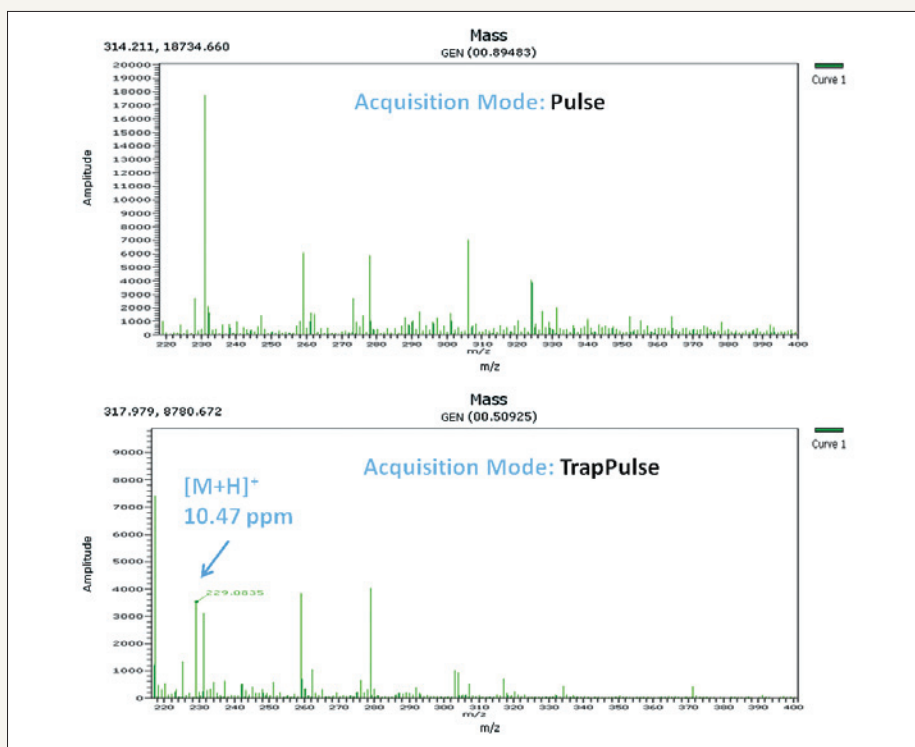
Food and Beverage: Resveratrol in red wine

Easy to use

Increased sensitivity

Rapid analysis

- Resveratrol is naturally occurring polyphenol present in grape skin and seeds
- It is an antioxidant thought to be present in higher levels in red wine and linked to many health benefits
- DSA-TOF analysis in TrapPulse™ mode of 1 uL of red wine (on a mesh) provides the required sensitivity for detection and confirmation of resveratrol
- The analysis was performed in 15 seconds with no sample preparation and external calibration



PerkinElmer, Inc.
940 Winter Street
Waltham, MA 02451 USA
P: (800) 762-4000 or
(+1) 203-925-4602
www.perkinelmer.com



For a complete listing of our global offices, visit www.perkinelmer.com/ContactUs

Copyright © 2012 PerkinElmer, Inc. All rights reserved. PerkinElmer® is a registered trademark of PerkinElmer, Inc. All other trademarks are the property of their respective owners.

010081_01