



DIRECT SAMPLE ANALYSIS

TOF MS

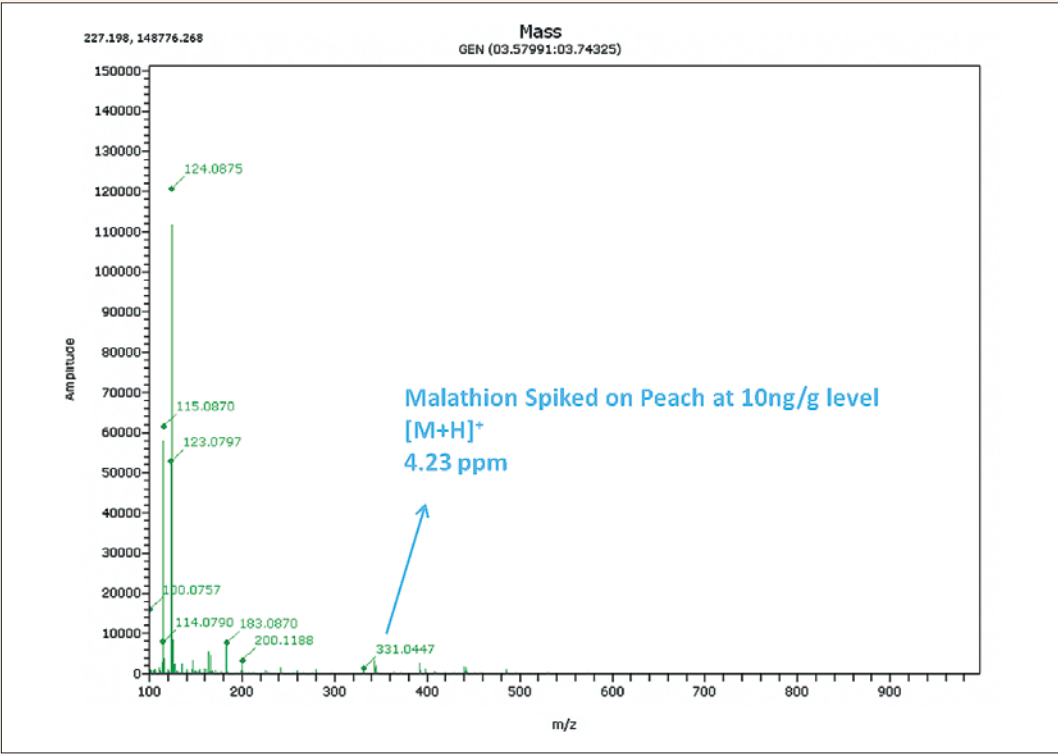
Food and Beverage: Malathion on peaches

Easy to use

Low detection limits

Fast, accurate mass

- Malathion is a commonly used insecticide. The EPA tolerance level for malathion on peaches is 8000 ng/g.
- A peach surface was spiked with 10 ng/g malathion, then swabbed with methanol and analyzed
- DSA-TOF analysis of the swab sample confirmed malathion, with high mass accuracy, at 800 times lower than the EPA tolerance level
- The analysis was performed in 15 seconds with no sample preparation and external calibration



PerkinElmer, Inc.
940 Winter Street
Waltham, MA 02451 USA
P: (800) 762-4000 or
(+1) 203-925-4602
www.perkinelmer.com



For a complete listing of our global offices, visit www.perkinelmer.com/ContactUs

Copyright © 2012 PerkinElmer, Inc. All rights reserved. PerkinElmer® is a registered trademark of PerkinElmer, Inc. All other trademarks are the property of their respective owners.