



DIRECT SAMPLE ANALYSIS

TOF MS

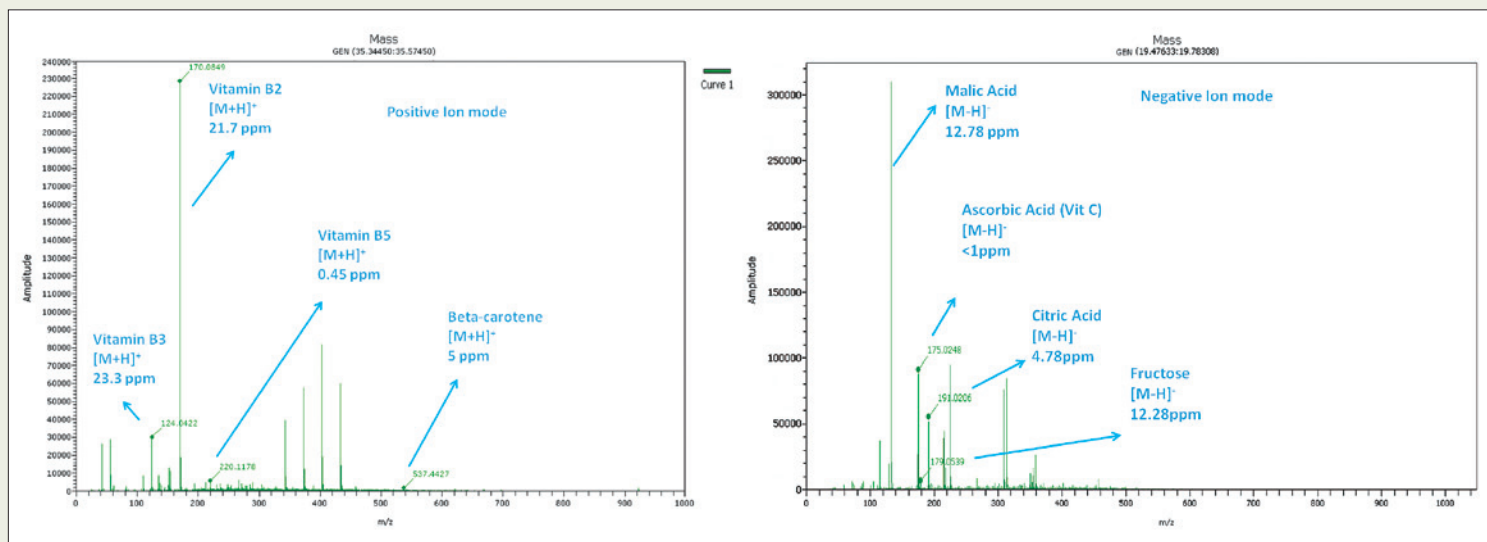
Nutraceuticals: Components of multivitamin powder

No sample preparation

Complete component analysis

Confirms product authenticity

- Emergen-C® is a dietary supplement designed to support healthy metabolic function
- Analysis in both positive and negative modes ensures complete product characterization
- DSA-TOF analysis of Emergen-C® powder in a glass capillary detects components with a high mass accuracy



PerkinElmer, Inc.
940 Winter Street
Waltham, MA 02451 USA
P: (800) 762-4000 or
(+1) 203-925-4602
www.perkinelmer.com



For a complete listing of our global offices, visit www.perkinelmer.com/ContactUs

Copyright © 2012 PerkinElmer, Inc. All rights reserved. PerkinElmer® is a registered trademark of PerkinElmer, Inc. All other trademarks are the property of their respective owners.

010083_01